

B:Music

Town Hall, Birmingham Specifications and Plans

Access and Parking	Page 2
Auditorium Seating	Page 3
Staging, Equipment and Pianos	Page 4
Lighting	Page 6
Sound	Page 8
Acoustics	Page 10
AV	Page 11
Power	Page 12
Rigging and Suspension	Page 13
Health and Safety and Special Effects	Page 15
Backstage Facilities and Catering	Page 16
Staffing and Security	Page 17
Contacts	Page 19

B:Music

Access and Parking

The Town Hall is situated in the centre of a major City Centre redevelopment scheme, *Paradise*.

***** Parking at the venue is severely restricted due to the building site works that surround us. Please speak with your Production Lead at the earliest opportunity regarding your options for parking*****

- Two locations are available for vehicle parking and unloading. Your production lead will be able to send a more detailed breakdown of the options available and discuss the best access routes.
- Permits must be displayed at all times.
- Distance from both locations to the stage door for unloading is approx. 85m.
- **There is no overnight parking in either location.**
- Get-in doors are 1.30m wide and 2.04m high.
- Flat access (down short ramp) to stage get-in.

B:Music

Auditorium Seating

Maximum capacity = 1086

Stalls

- Theatre style seating - all removable if required.
- 507 seats, 8 of which can be removed to accommodate wheelchair users.
- When the touring mixer position is in use – reduce by 17 seats.
- When a 2m stage extension is used, reduce by 85 seats (Rows A, B, C). When a 3m stage extension is used, reduce by 114 seats (Rows A, B, C, D).
- With additional toured ground stacks either side of stage, reduce by 8 seats for sightlines. These can be released if necessary.
- When treads are used; no extension - reduce by 21 seats (A1-5 & 24-28, B1-5 & 24-29); 2m extension – reduce by 11 seats (D1-5 & 24-29); 3m extension – reduce by 10 seats (E1-5 & 24-28).

Circle

- 358 seats.

Circle (sides)

- 58 seats plus 4 wheelchair positions.

Choir

- 179 choir seats (restricted sightlines - to be put on sale only in agreement with B:Music management).

Part Seated / Part Standing

It is possible for certain events to remove the stalls seating to enable a standing area instead. The maximum capacity for a standing audience in the stalls is 800. This will require the hiring of a crowd barrier and the agreement of the B:Music programming department.

B:Music

Staging, Equipment and Pianos

Stage

- Flat upstage wall with diagonal corner sections, 14.6m wide, 8.0m deep and 1.25m high.
- A corridor lift provides a level access route from the get-in to the auditorium and to raise items to stage level. This is 8.0m x 2.0m. There is no other route for items into the hall or onto stage.
- Two lifts allow the rear part of the stage to be tiered. Please see details on the following plan.
- A temporary stage extension is available. This is constructed from steel deck and extends the stage by 2m or 3m (recharge).
- Two sets of steps are available for access from / to the auditorium.

Equipment

- Conductor's podium
- 95 x orchestral chairs and 4 x stools with backs (blue)
- 50 x music stands (with lights if required)
- 1 x conductor's music stand (with light if required)
- (4) x 4'x4' Black Lite deck (with 1' legs)
- Small portable PA (recharge)
- 1 x MVS Smart Hazer (recharge)

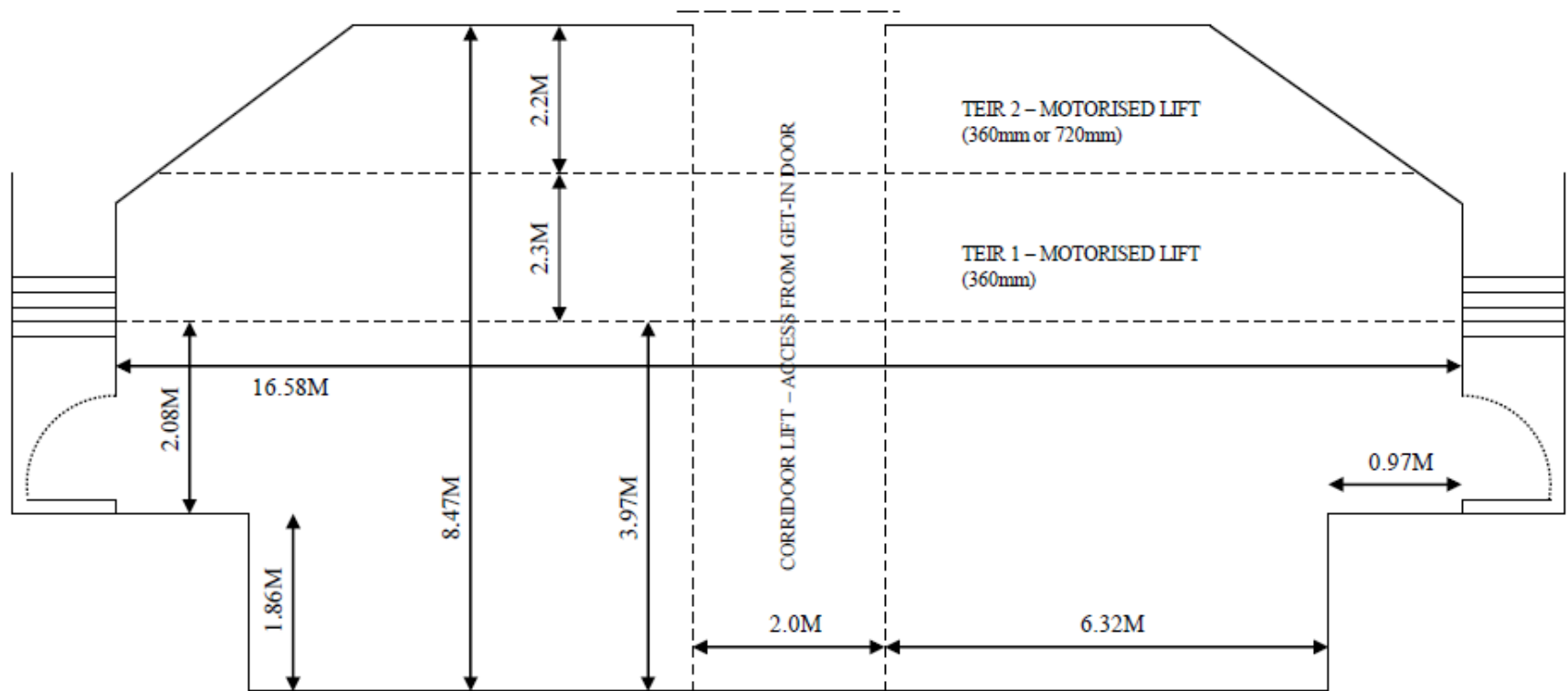
Pianos

- 1 x Steinway D (recharge)
- 1 x Yamaha C7 (recharge)
- 2 x Uprights – Dressing Rooms 1 & 2

Organ (recharge)

- 89 stop pipe organ (William Hill, 1834) with attached draw-stop console

↑
GET IN DOOR



STAGE HEIGHT 1.25M

B:Music

Lighting

House

Tungsten lighting

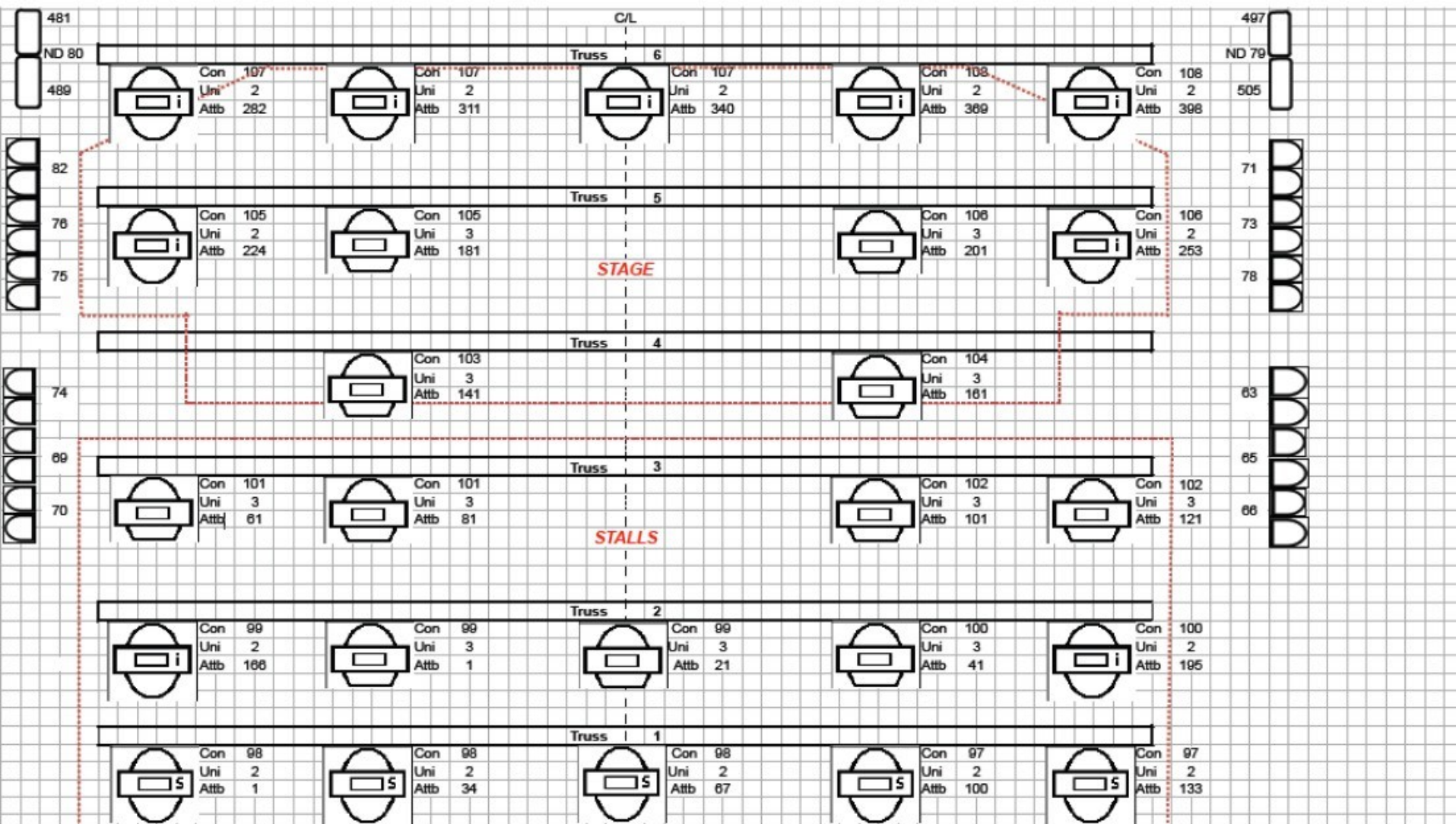
Concert / Orchestral

24 x Source Four Par 575W open-white permanent lighting mounted within the canopy, and whilst independent of the main production lighting, it can be integrated with it.

Production

- Desk: Avolites Quartz with side wing and wireless router.
- Lights: Chauvet LED rig consisting of Maverick MK2 Profiles and Washes, plus MK1 Spots.
- Full plan on following page.
- 2 x Robert Juliat Flo 1.8kW MSR followspots (recharge) Only approved Town Hall staff are permitted to operate follow spots due to evacuation training requirements.
- There is a Chauvet floor package including Slimpar Tri12 LED's, Colorado 1 TriTour LED Washes and Rogue 1 Spot Moving Heads available for hire, plus Prolight Smartbat Battery LED Uplighters (recharge).
- For touring shows, a large area is available at the rear of the stalls for lighting desks.
- Touring followspots can be accommodated either side of the control room at the rear of the circle, via 2 x 32A/single sockets.

NB. The lighting rig is fixed and no extra lights are to be hung from the canopy or side frames



Con = Contactor for Mavericks - **must be on at all times**
 Attb = Attribute DMX number (movement, colour etc)
 ND = Non Dim

Universe 1 = Dimmers (Side Pars)

Universe 1 = Contactors

Universe 1 = Cyc Bar LEDs, Rogue R1 Spots

Universe 2 = Maverick Spots & Profiles

Universe 3 = Maverick Washes

Cyc Bar LEDs (Colorado 1 Tri Tour - ARC1 3 DMX)

351, 357, 360, 363, 366, 369

Rogue R1 Spot (Advanced, 19 DMX)

400, 419, 438, 457

**Rechargeable cost*

HOUSE LIGHTS

Under Balcony - 142, 143, 144

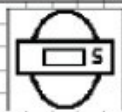
Cathode (roof) - 130, 140, 141

Circle - 131, 133, 134, 135, 137

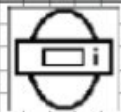
Window Blinds - 1, 2, 3

Stalls 132, 136

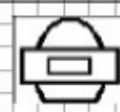
Choir - 130, 138, 145, 146, 147, 148



Maverick
MK 2 Profile
33 Channel



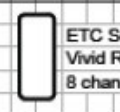
Maverick
MK 1 Spot
29 channel



Maverick
MK 2 Wash
20 channel
Single Basic



575W Par



ETC Selador
Vivid R-LED
8 channel

B:Music

Sound

Circle and Stalls Coverage

- 14 x d&b Ti10L Line Array Hangs (7 each side)

Stalls Coverage

- 4 x d&b 8s Front Fills
- 2 x d&b 24s-D Under Balcony Fills
- 4 x d&b 21s Subs (2 each side)

Balcony Coverage

- 2 x d&b 10s Outfills

Choir Seats Coverage

- 2 x d&b 10s Fills

Audio Control

- 2 x Midas M32 consoles (With router for remote tablet operation if required) – available as FOH desk (stalls or control room position) or onstage monitor desk
- Connection to PA system via:
 - a) 2 AES inputs – L/R (including flown arrays, under balcony fills & balcony outfills), Subs/Front Fills).
 - b) Analogue (L+R only).
 - c) Dante – T10s, under balcony fills, balcony outfills, subs, front fills.*Choir fills on separate feed.*
- 1 x Midas DL32 (32 in 16 out) Digital Stage Box with CAT5 reel (for use with desk in stalls position)
- 2 x 12 in 4 out stage boxes with VEAM connector & various analogue patch points (for use with desk in control room position)
- 2 x Pulse 8 Way Satellite Boxes

Please note, the venue PA is fixed and will not be removed for any touring flown equipment. Ground stacked systems can still be toured or hired if required.

There are various recharge options for using the PA, please refer to the recharges section.

B:Music

Sound Stock

1 x Shure Beta 91a
1 x Shure Beta 52a
1 x AKG D112
6 x Sennheiser e604
2 x Rode NT5
5 x Shure SM57
1 x Shure Beta 57a
9 x Shure SM58
4 x AKG SE300b (2x CK91 + 2x CK98)
2 x AKG C414
3 x AKG C542 BL
6 x Audio Technica ES915
2 x Sennheiser e845

3 x Sennheiser e935 G3 Handhelds
3 x Sennheiser EW500 Lavaliers
2 x Pulse Headsets

11 x LD Systems/BSS/S-Direct DI Boxes
2 x Pioneer PLX-1000 DJ Decks
7 x Active RCF ART 310A Speakers

B:Music

Acoustics

- The acoustic canopy is a series of reflectors in a checkerboard style, suspended over the stage and auditorium and can move to preset positions that alter the acoustic character of the hall
- 27 acoustic blinds over the main windows are used to vary the acoustics of the hall
- All power operated units are controlled from stage right by Town Hall technical staff
- A full black drape is available for amplified performances to assist with reducing the reverberation within the auditorium

B:Music

AV

Screen and Projector

- Panasonic MZ770 8k 3LCD Laser Projector (permanently rigged within the lighting canopy)
- HDMI connection stage left
- 16' x 9' Front Projection Screen

Additional Extras

- 2 x 32" LG Comfort Monitors
- 2 x 43" LG Relay Screens
- HD Anywhere mHub 4K Pro 8x8 Switcher
- Panasonic PTLB50NTEA Projector – for Lower Bar only (with pull down screen)

The above is subject to a recharge.

We are also able to offer at a cost, any supplementary AV equipment you might need from a number of trusted local suppliers. If you require any hires, please contact your venue production lead.

B:Music

Power

Lighting Power (Stage right) is 400 amps 3phase via;

- Powerloks
- 1 x 32A 3phase cee-form
- 1 x 63A 3phase cee-form

Sound Power (Stage Left) is;

- 1 x 63A 3phase cee-form (if using touring PA)
- 1 x 32A 3phase cee-form (if using any part of the house PA)
- 1 x 63A single phase cee-form

Outdoor Vehicle Power 1x 32A single phase & 1x 16A single phase for trucks and buses. The location of this will be given in more detail when discussing vehicle parking.

B:Music

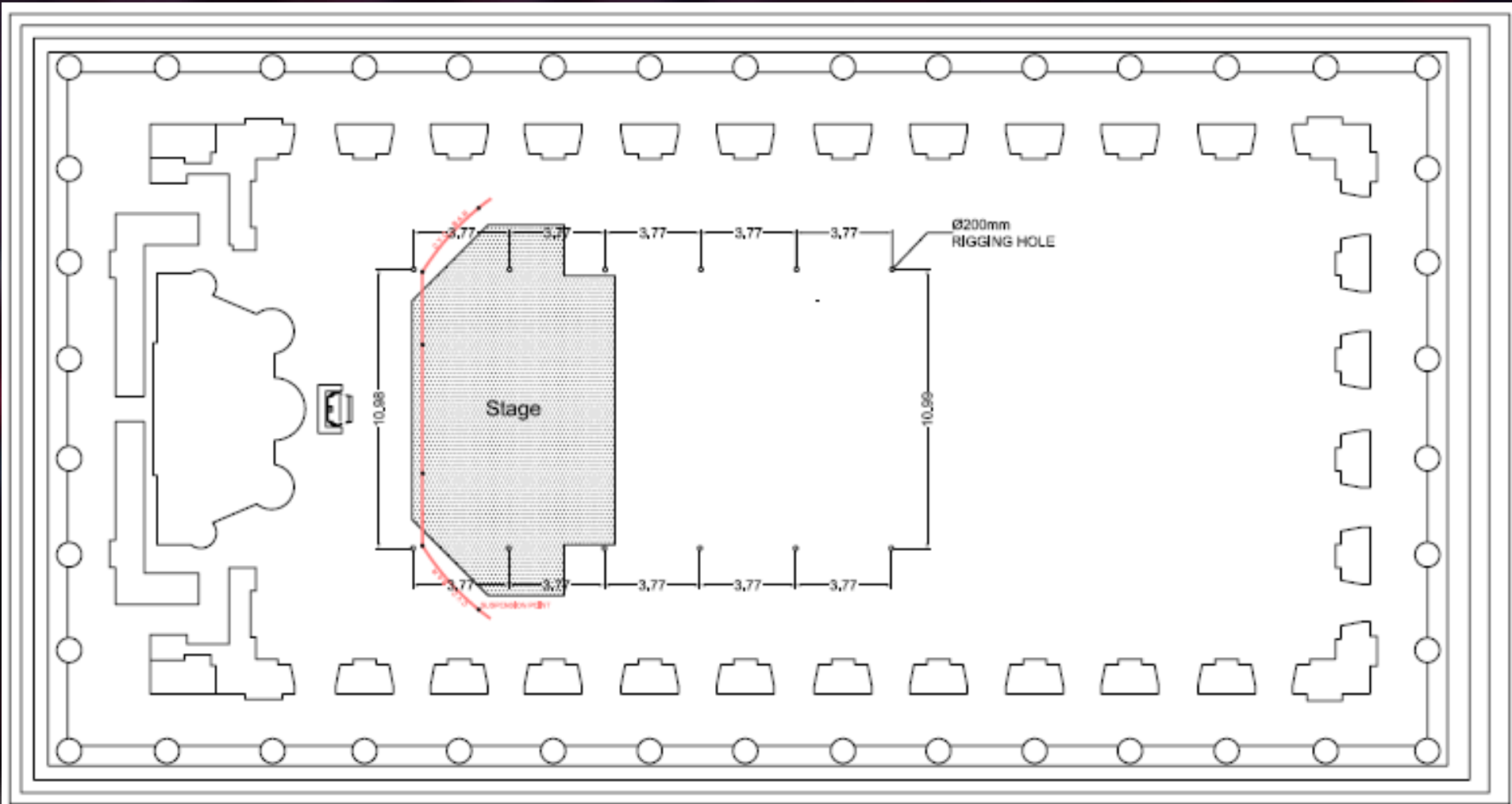
Rigging and Suspension

- There are points available over the stage and stalls for hoists.
- All primary suspensions are to be rigged by Town Hall riggers (recharge).
 - **NB. No points are to be rigged from the canopy.**
- Truss-walking is prohibited and we have no access for focusing touring lights.
- Each rigging point is rated to 350kg.
- A rigging plan can be found on the following page.

- A cyc bar (following the upstage wall) is available for black drapes or star cloth.
- 50kg of weight can be added to the cyc bar, in addition to the venue lights and drapes.

- Ceiling height is 17.90m above platform level.

We can provide a quote for truss, motors and additional rigging equipment via our house rigging suppliers. Please contact your production lead for further information.



*red line = cyc bar

B:Music

Health and Safety and Special Effects

Risk Assessments

All events will need to submit a risk assessment covering all activities undertaken at our venue by members of your company. This is a mandatory legal requirement under the Management of Health and Safety at Work Regulations 1999 and it is essential that we have this information.

Special Effects

- Please note that the use of pyrotechnics or other activities involving naked flames, confetti or glitter cannons are strictly forbidden in Town Hall due to Health and Safety risks and the Grade I listed status of the building.
- Only water based hazers can be used in the Town Hall. Haze **must** be thoroughly checked prior to your event to ensure that it does not interfere with the venue fire alarm system.

Noise Limits

Town Hall follow the HSE guidelines for noise limits in the auditorium. A set of guidelines for these can be obtained from your production lead if required. B:Music staff will monitor decibel levels on any given event and if the limits are met, pushed or exceeded – the FOH engineer on duty will be asked to reduce levels accordingly.

B:Music

Backstage Facilities and Catering

Backstage

- There are drop down shelves on the walls for instrument cases and storage.
- Fridge, hot water urn and optional tea and coffee provisions.
- Large round table and seating area.

Dressing Rooms

Stage Level: DR1 - Principal dressing room – full en suite, upright piano, fridge (max capacity 10)

DR2 - Principal (accessible) dressing room – full en suite, upright piano (max capacity 10)

DR 3/4 – Artist dressing rooms – full en suite (max capacities 2)

Touring Production Office

Above Stage: DR 5 – Artist dressing room – toilet only (max capacity 15)

DR 6 – Artist dressing room – toilet only (No. 6 – max capacity 5)

DR 7/8 - Artist dressing rooms (No.7 and 8 – max capacities 2)

Catering

Due to the Grade I listing of the building, we are unable to accommodate tour caterers and have no kitchen facilities on site. If hospitality riders are required, we can quote for these accordingly.

B:Music

Staffing and Security

- The following technical staff are *usually* included within the rental;
 - Stage Manager
 - Assistant Stage Manager
 - Lighting Technician
- A Sound Technician will be subject to a recharge in line with the PA costs

Bag Searches

In line with CTU (Counter Terrorism Unit) recommendations, Town Hall have introduced random bag searches, as managed and coordinated by the venue's Stage Door Supervisors. B:Music are not permitting exemptions in respect to visiting touring crew(s), third party contractors, clients and event organisers, in addition to B:Music personnel. Whilst the specific search procedure will not be identified, our clients and visiting personnel can be assured the searches are conducted in accordance with agreed protocols and to the highest standards and all searches conducted have accompanying paperwork to aid audit and compliance.

Venue Security

Security operations and associated costs can be discussed with your production lead. We can offer additional requirements for meet and greets and VIP experiences upon request.

B:Music

PA Recharges

'Plug and play' into full PA system
Tour supplies microphones, monitor packages and control systems
Venue sound tech to oversee and assist
£550+VAT

Full PA plus venue FOH desk
Tour supplies microphones and monitor packages
Venue sound tech to oversee and assist
£600+VAT

Full PA, venue FOH desk plus full venue sound stock
Active Monitors operated from FOH only
Venue sound engineer
£650+VAT

N.B All recharges are contract dependent

B:Music

Contacts

Production and Technical

production@bmusic.co.uk technical@bmusic.co.uk

Kat Wheller, Head of Production & Technical
0121 289 6217 / kat.wheller@bmusic.co.uk

Des Hall, Production Coordinator
0121 289 6253 / des.hall@bmusic.co.uk

Dave Casswell, Production Coordinator
0121 289 6252 / david.casswell@bmusic.co.uk

Jake Parsons, Production Coordinator
0121 289 6284 / jake.parsons@bmusic.co.uk

Jade Sewell, Production Coordinator
0121 289 6251 / jade.sewell@bmusic.co.uk

Chris Griffiths, Senior Technician
0121 289 6218 / chris.griffiths@bmusic.co.uk

Programming and Finance

programming@bmusic.co.uk

Chris Proctor, Head of Programme
0121 289 6209 / chris.proctor@bmusic.co.uk

Sally Rea Morris, Contemporary Programme Producer
0121 289 6209 / sallyrea.morris@bmusic.co.uk

Aaron Carmichael, Programme and Events Assistant
0121 289 6209 / aaron.carmichael@bmusic.co.uk

Nicole Evans, Director of Commercial Services
0121 289 6205 / nicole.evans@bmusic.co.uk

Finance Department, Settlement Queries
event.accounts@bmusic.co.uk

Please ask your Production Lead or Venue Contact for a list of recharges if required.